

# 2022 PRESS KIT





A new chapter is opening in the history of Delphia. By developing a sustainable approach to navigation, Delphia addresses lake and river lovers, those who appreciate quiet and silent cruising.

Since joining Groupe Beneteau in 2018, Delphia has enjoyed increased international presence, as well as industrial know-how and investment capacity for further growth. This has developed a real synergy of expertise, driving Delphia to take an active role in ecological transition and helping it to devise an innovative and sustainable strategy and product plan. In the near future, Delphia's inland waterway boats will only have electric drives.

In 2022, the launch of Delphia 11 illustrates perfectly this strategy and offers comfort, ease of use, respect of the environment and equipment to discover many places in good company...

# Contents

01 Mindful Cruising

02 Collection

03 Contacts



# MINDFUL CRUISING

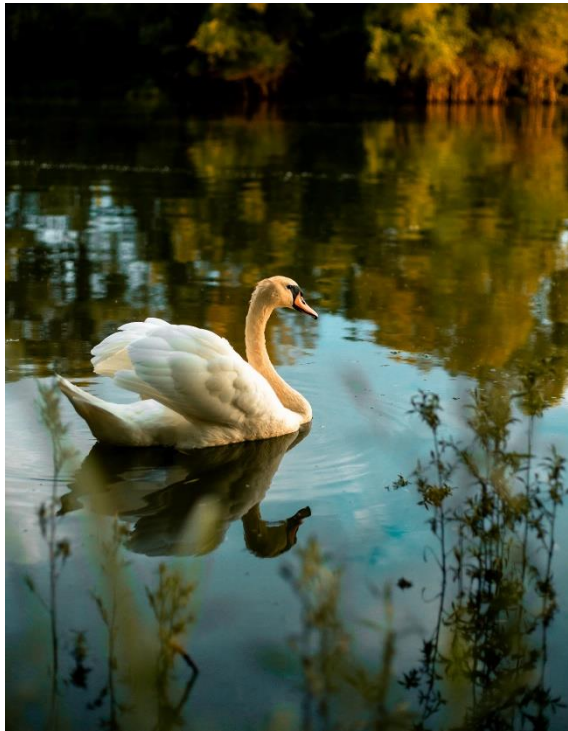


# 01 Mindful Cruising

## Our brand

Delphia was first established 30 years ago in the heart of the Masurian Lake District, known as the “land of a thousand lakes”. Since then, it has been a pioneer in the production of custom-designed boats. Inspired by nature, Delphia is intent on offering customers an unprecedented level of relaxation onboard, characterised by the use of smart solutions and sustainable materials.

At Delphia, we call it mindful cruising.





# 01 Mindful Cruising

## Our mindset

We believe that deceleration is key to meaningful and relaxing cruises on inland waterways. That's why we give owners and passengers alike the possibility to enjoy moments of pleasure – on boats crafted with comfort, convenience and ease. Where sustainable product solutions enable boaters to mindfully harmonize with nature and their loved ones.





# 01 Mindful Cruising

## Sustainability

Sustainability isn't just about the environment; sustainability is also about people's well-being. It is a way of thinking and acting, and a principle we must be guided by.





# 01 Mindful Cruising

## Electric concept

Is it possible to imagine cruising in complete silence?

Is it possible to imagine breathing pure air?

Is it possible to imagine being part of a better future?

Delphia strives to be a “nature-friendly” boatbuilder and with this in mind it has teamed up with Torqeedo – a leader in e-mobility in the marine industry.

The perfect blend of an intuitive and easy-to-use propulsion system with an optimised hull promises unforgettable moments exploring new shores with your loved ones. Convenient, simple and cheap to run, Torqeedo’s Deep Blue electric drive system is outstanding and on top of that it is serviced by a worldwide network of partners.





# TECH DATA PROPULSION

## ELECTRIC

- 3 SYSTEM FITTING VARIOUS USE CASES
- “LIFE” FOR LAKES OR LIMITED NAVIGATION
- “CRUISE” FOR CRUISING AND LONGER STAYS
- “RAPID” FOR FAST CHARGING WHERE AVAILABLE
- POSSIBILITY OF LOWERABLE CHARGING POWER
- USER-FRIENDLY INTERFACE
- ROUTER FOR REMOTE SERVICE

*Torqueedo*

|  | LIFE | CRUISE | RAPID |
|--|------|--------|-------|
| Deep Blue 50i 1.400 rpm, 55,10 kW/ 80 hp motor | ✓    | ✓      | ✓     |
| Single BMW i3 battery pack, totalling 40 kWh   | ✓    |        |       |
| Dual BMW i3 battery pack, totalling 80 kWh     |      | ✓      | ✓     |
| Single 3.3 kW charger                          | ✓    |        |       |
| Triple 3.3 kW charger                          |      | ✓      |       |
| Single 22 kW fast charger                      |      |        | ✓     |
| DC/AC inverter, 6kW                            |      | ✓      | ✓     |
| Deep Blue 7" touch display incl. router        | ✓    | ✓      | ✓     |

# TECH DATA PROPULSION & BATTERY

**Torqeedo**

## ELECTRIC

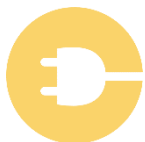
- DISPLACEMENT NAVIGATION OPTIMIZED
- CLEAN, SILENT, ODOURLESS
- MAXIMUM PROTECTION
- LOW MAINTENANCE COSTS
- 2 YEARS WARRANTY ON SYSTEM
- 9 YEAR WARRANTY ON BATTERY CAPACITY
- FULL SYSTEM INTEGRATION
- HIGHEST SAFETY STANDARDS ON SYSTEM LEVEL



| Deep blue 50i 1400       |           |
|--------------------------|-----------|
| Input power (peak)       | 56.0 kW   |
| Input power (continuous) | 50.0 kW   |
| Comparable petrol power  | 80 hp     |
| Motor weight             | 80 kg     |
| Rated speed              | 1.400 rpm |



| Deep blue battery 40        |         |
|-----------------------------|---------|
| Nominal voltage             | 352.3.V |
| Max. continuous performance | 55 kW   |
| Capacity (usable)           | 38 kWh  |
| Weight                      | 284 kg  |



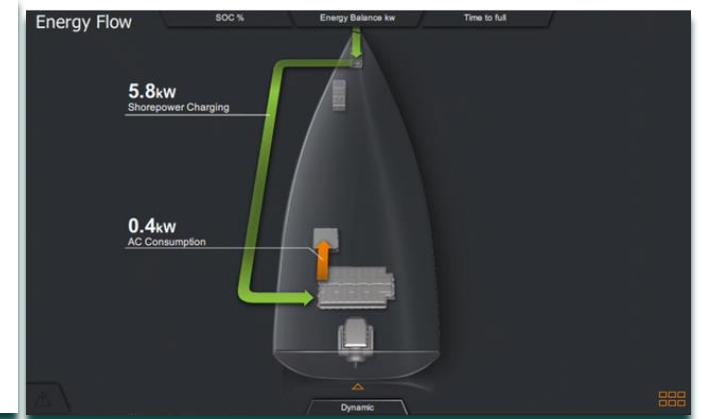
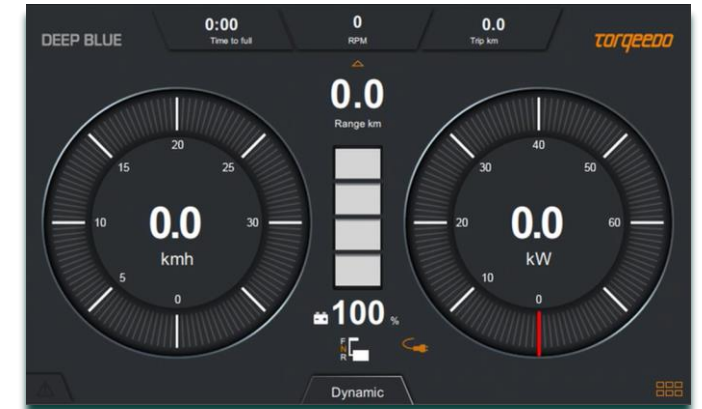


# TECH DATA USER INTERFACE & TORQTRAC APP

**TORQEEDO**

## ELECTRIC

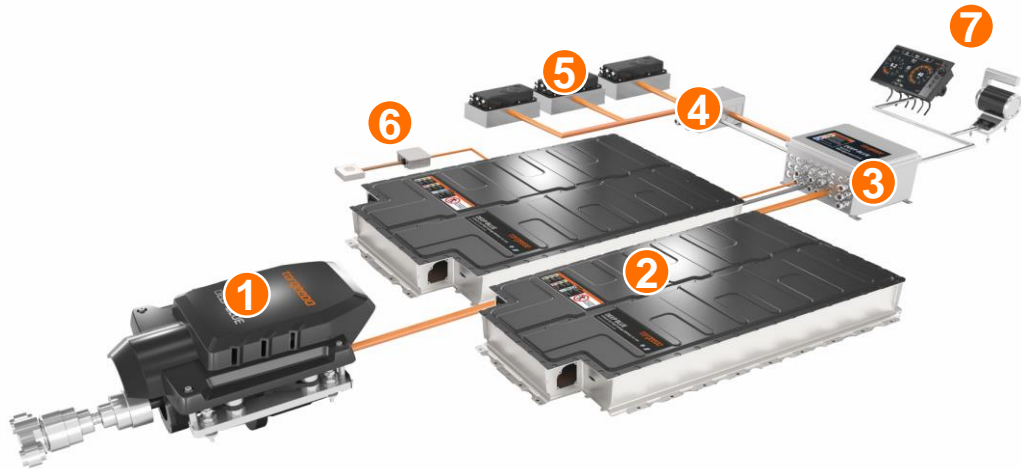
- ▮ INTUITIVE NAVIGATION ON SEPARATE DISPLAY
- ▮ ALL RELEVANT INFORMATION AT HAND
- ▮ ADVANCED ERROR MANAGEMENT AND SYSTEM SAFETY
- ▮ FULL TRANSPARENCY AND LIVE RANGE CALCULATION
- ▮ RANGE VISUALISATION ON MAP
- ▮ LOGBOOK
- ▮ TORQTRAC MOBILE APP



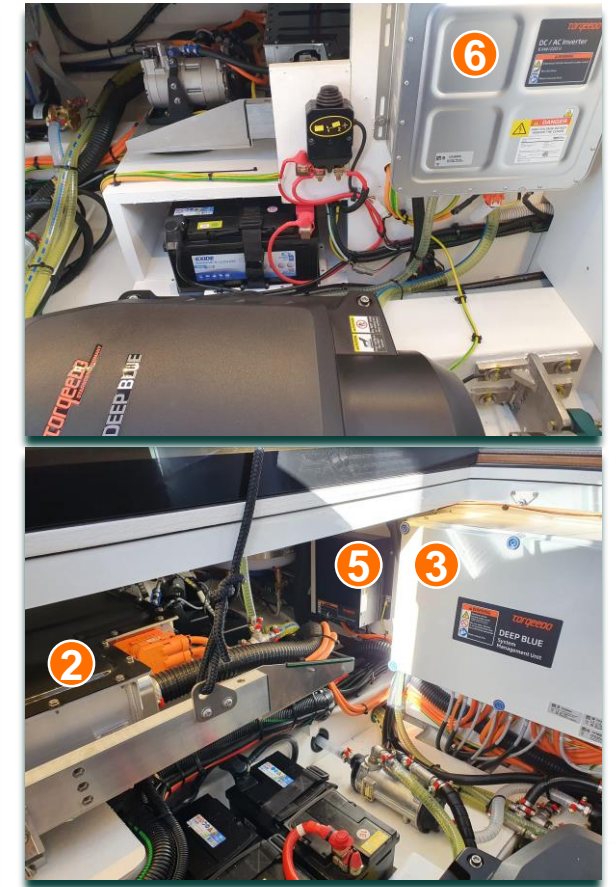
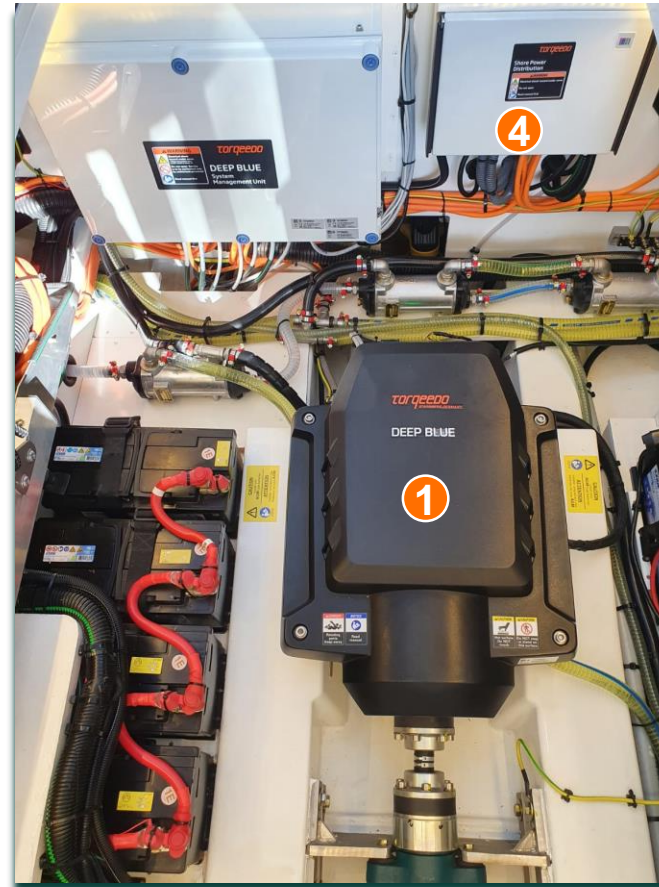
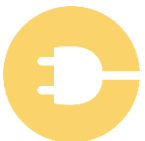
**DELPHIA**

# TECH DATA SYSTEM COMPONENTS

## ELECTRIC



- 1 DEEP BLUE 50i 1400
- 2 DEEP BLUE BATTERY 40 (2x CRUISE & RAPID)
- 3 SYSTEM MANAGEMENT UNIT
- 4 SHORE POWER DISTRIBUTION UNIT
- 5 SHORE POWER CHARGER
- 6 DC/AC 6kW (CRUISE & RAPID)
- 7 SYSTEM CONTROLS



*Torqeedo*



# COLLECTION

# 02 Collection

Our boats are designed for those who want to decelerate.

Slow down in style and comfort.

Retreat to the inland waterways in a sustainable way.

Share a peaceful and mindful experience with the ones they love.





# 02 Collection

## Delphia 12, your home on the water

### HYDRODYNAMICS

The 100% displacement hull has been specifically designed by Tony Castro to navigate the inland waterways. It ensures a perfect balance between stability and internal volume with special attention given to minimal consumption and extended range.

### SILENCE

Noise - or sound pollution - has a negative impact on humans and all living organisms. The reduction of any kind of noise is Delphia's mission, therefore we strive to integrate onboard systems with the lowest possible noise level. Moreover, we install sound insulation where needed.

### EASY BOARDING

With Delphia 12, boaters can choose where they want to step on board - transom, port side, starboard side or from the bow.

### SINGLE HANDED

Every Delphia model has as standard sliding helm door which gives the captain easy access to the side deck and simultaneous control of the throttle, powerful thrusters and docking lines. All designed to be managed by a single person in full confidence.





# 02 Collection

## Specifications

|   | DELPHIA 12 SEDAN                 |                                | DELPHIA 12 FLYLOUNGE             |                                |
|---|----------------------------------|--------------------------------|----------------------------------|--------------------------------|
| LOA   Länge über alles                                      | 12,45 m                          | 40'10"                         | 12,45 m                          | 40'10"                         |
| Hull length   Rumpflänge                                    | 12 m                             | 39'4"                          | 12 m                             | 39'4"                          |
| Beam   Gesamtbreite   | 4,26 m                           | 13'12"                         | 4,26 m                           | 13'12"                         |
| Draft   Max. Tiefgang                                       | 0,84 m                           | 2'9"                           | 0,84 m                           | 2'9"                           |
| Displacement   Verdrängung                                  | 8 500 kg                         | 18 739 lbs                     | 8 750 kg                         | 19 290 lbs                     |
| Engine (min)   Motor (mindest)                              | 57 HP                            | shaft drive                    | 57 HP                            | shaft drive                    |
| Engine (max)   Motor (max)                                  | 2 x 110 HP                       | shaft drive                    | 2 x 110 HP                       | shaft drive                    |
| Fuel tank   Kraftstofftank (max.)                           | 300 l                            | 65 gal.UK                      | 300 l                            | 65 gal.UK                      |
| Water tank   Wassertank (max.)                              | 200 l                            | 43 gal.UK                      | 200 l                            | 43 gal.UK                      |
| Black & grey water tank   Fäkalien- und Grauwas-<br>sertank | 250 l & 150 l                    | 55 & 33 gal.UK                 | 250 l & 150 l                    | 55 & 33 gal.UK                 |
| Airdraft   Höhe ab Wasserlinie                              | 2,65 m                           | 8'8"                           | 3,63 m                           | 11'11"                         |
| Cabins   Kabinen  | STANDARD min<br>2 cabin, 2 heads | OPTION max<br>2 cabin, 2 heads | STANDARD min<br>2 cabin, 2 heads | OPTION max<br>2 cabin, 2 heads |
| CE-category   CE-Kategorie                                  | B – 8 people<br>C – 12 people    |                                |                                  |                                |

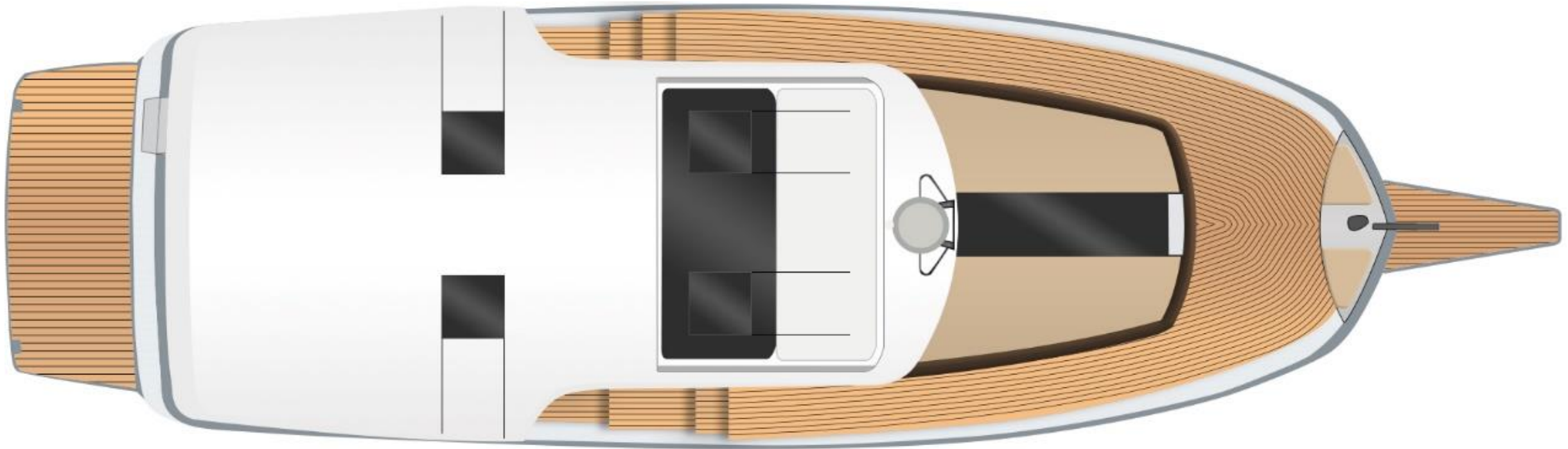




# 02 Collection

## Layouts

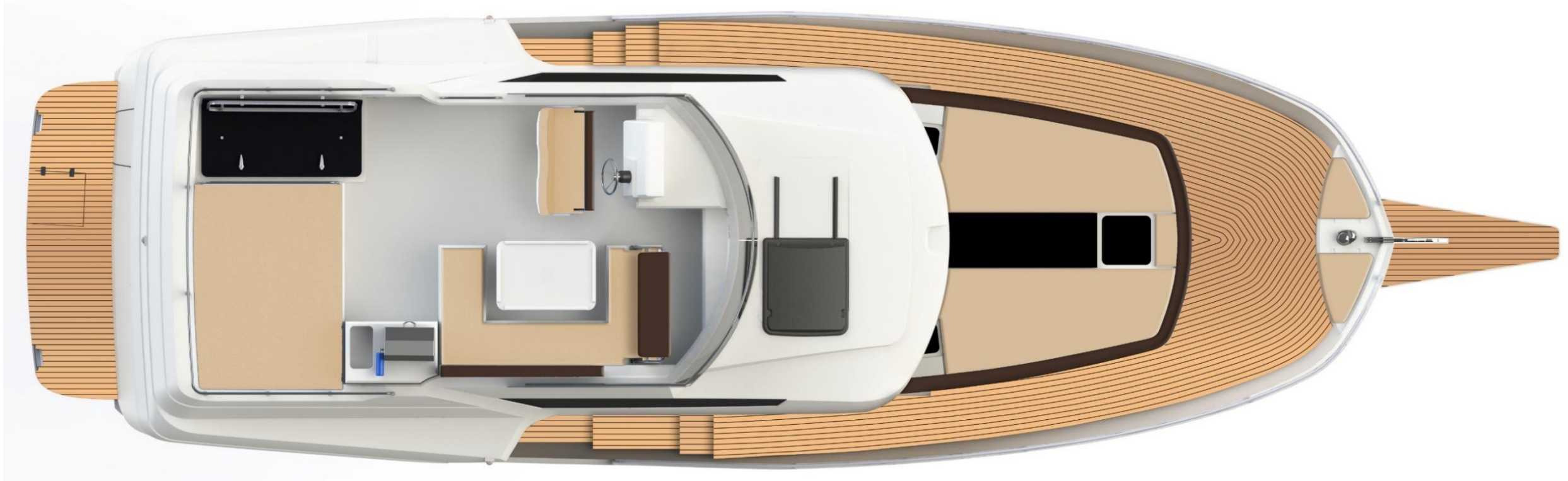
### Sedan



# 02 Collection

## Layouts

### FlyLounge top view



Aft sunpad with storage and dining area



# 02 Collection

## Layouts

2 cabins – 2 heads



Spacious L shaped cockpit bench and convenient side door at helm

# 02 Collection

## Delphia 11, when distinctive style meets advanced simplicity

### HULL PROTECTION

Part of Delphia's design elements are its distinctive oversized rubber rub rails that stretch all along the hull side. Their role is first and foremost to protect the hull against damages, but they also highlight the boat's beautiful and sleek profile

### 230V HOME APPLIANCES

A way to start the day like usual thanks to Delphia's smart 12V-to-230V inverter system. It ensures boaters will have their morning coffee even if they are out of the harbor.

### ALTERNATIVE DECKING

Forests are considered the lungs of our planet and minimizing the use of tropical hardwood is one way for a better future. All Delphia designs exclusively use an alternative vinyl decking material manufactured with sustainable methods. The benefit is not only an eco-friendly product, but one that is lighter, easier to maintain and that lasts longer.

### THE MASTER CHEF

Spoiling boaters' guests or family members with delicious gourmet food adds bonus points to onboard living. But achieving this requires a chef's creativity, fresh ingredients, and a kitchen with all the required appliances. Delphia 11 even further than this by adding a welcoming outside wet bar equipped with a gas BBQ and a large prep area suitable for any grill master.





# 02 Collection

## Specifications

|   | DELPHIA 11 SEDAN                                |                                | DELPHIA 11 FLYLOUNGE            |                                |
|---|---|--------------------------------|---------------------------------|--------------------------------|
| LOA   <i>Länge über alles</i>                                 | 10,77 m   | 35'4"                          | 10,77 m                         | 35'4"                          |
| Hull length   <i>Rumpflänge</i>                               | 9,99 m  | 32'9"                          | 9,99 m                          | 32'9"                          |
| Beam   <i>Gesamtbreite</i>                                    | 3,85 m  | 12'8"                          | 3,85 m                          | 12'8"                          |
| Draft   <i>Max. Tiefgang</i>                                  | 0,8 m   | 2'7"                           | 0,8 m                           | 2'7"                           |
| Displacement   <i>Verdrängung</i>                             | 6 815 kg  | 15 024 lbs                     | 7 314 kg                        | 16 124 lbs                     |
| Diesel engine (min)   <i>Motor (mindest)</i>                  | 57 HP   | shaft drive                    | 57 HP                           | shaft drive                    |
| Diesel engine (max)   <i>Motor (max)</i>                      | 150 HP  | shaft drive                    | 150 HP                          | shaft drive                    |
| Electric engine (min)   <i>Elektromotor (mindest)</i>         | 80HP/55,10kW incl. 40kWh battery pack           |                                |                                 |                                |
| Electric engine (min)   <i>Elektromotor (max)</i>             | 80HP/55,10kW incl. 80kWh battery pack           |                                |                                 |                                |
| Fuel tank   <i>Kraftstofftank (max.)</i>                      | 400 l   | 88 gal.UK                      | 400 l                           | 88 gal.UK                      |
| Water tank   <i>Wassertank (max.)</i>                         | 380 l   | 83 gal.UK                      | 380 l                           | 83 gal.UK                      |
| Black & grey water tank   <i>Fäkalien- und Grauwassertank</i> | 170 l & 170 l                                   | 37 & 37 gal.UK                 | 170 l & 170 l                   | 37 & 37 gal.UK                 |
| Airdraft   <i>Höhe ab Wasserlinie</i>                         | 2,75 m  | 9'                             | 2,95 m                          | 9'8"                           |
| Cabins   <i>Kabinen</i>                                       | STANDARD min<br>1 cabin, 1 head                 | OPTION max<br>3 cabin, 2 heads | STANDARD min<br>1 cabin, 1 head | OPTION max<br>3 cabin, 2 heads |
| CE-category   <i>CE-Kategorie</i>                             | B – 10 people<br>C – 14 people<br>D – 14 people |                                |                                 |                                |
| Designer   <i>Designer</i>                                    | Tony Castro Yacht Design                        |                                |                                 |                                |



 DELPHIA







# 02 Collection

## LAYOUTS

### FlyLounge top view



Folding backrests - air draft 295 cm

# 02 Collection

## Layouts

Sedan top view



6 solar panels and a relaxing bow lounge area



# 02 Collection

## Layouts

### Main deck



Luminous thanks to Skylight and comfortable with U-shaped cockpit and bench with storage



## 02 Collection

## Layouts

3 cabins, 2 heads





# CONTACTS

# 03 Contacts

## Access to the Delphia Media Library

Press contact:

Luc Joessel

[l.joessel@beneteau-group.com](mailto:l.joessel@beneteau-group.com)

Postal address:

SPBI - DELPHIA

Parc d'activités de l'Eraudière

CS30045

85170 Dompierre sur Yon

France

<https://www.delphiayachts.com/>

